





2011.05.09 17:02







2011.05.09 17:03

























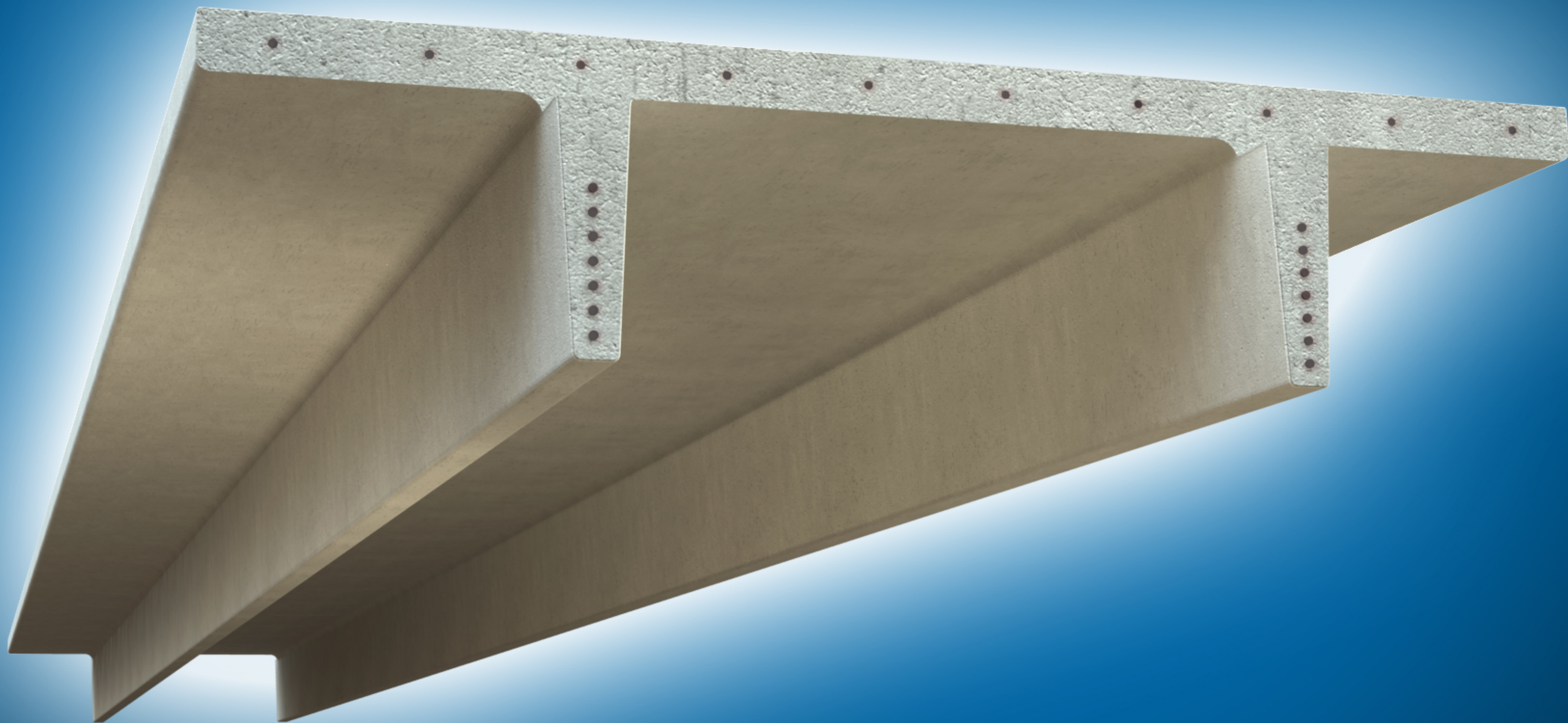
11-5
12-5
13-5
14-5

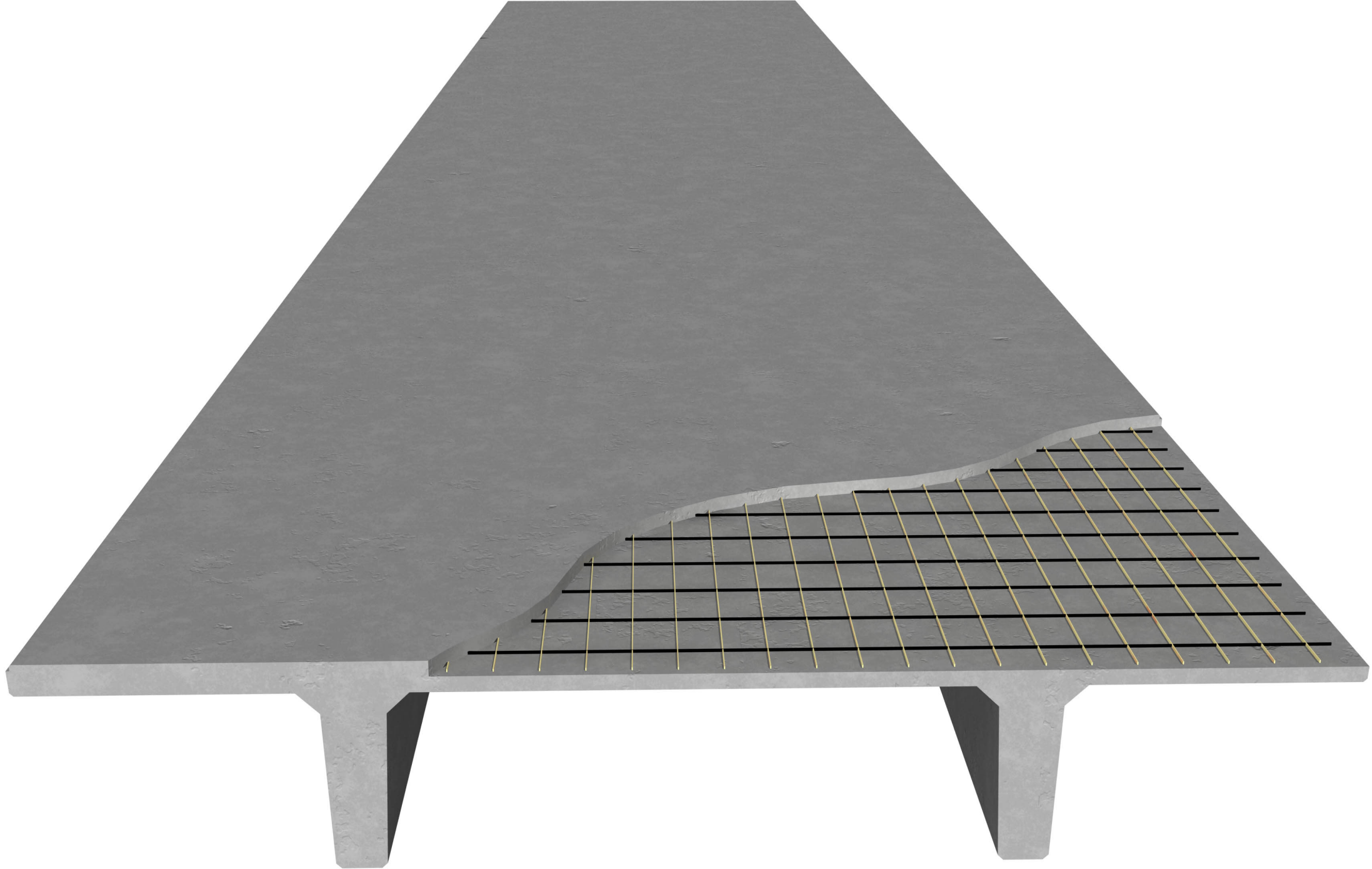
11-5
12-5
13-5
14-5

11-5
12-5
13-5
14-5



















Download from
Dreamstime.com

This watermarked comp image is for previewing purposes only.



36315658



Denys Kurylow | Dreamstime.com











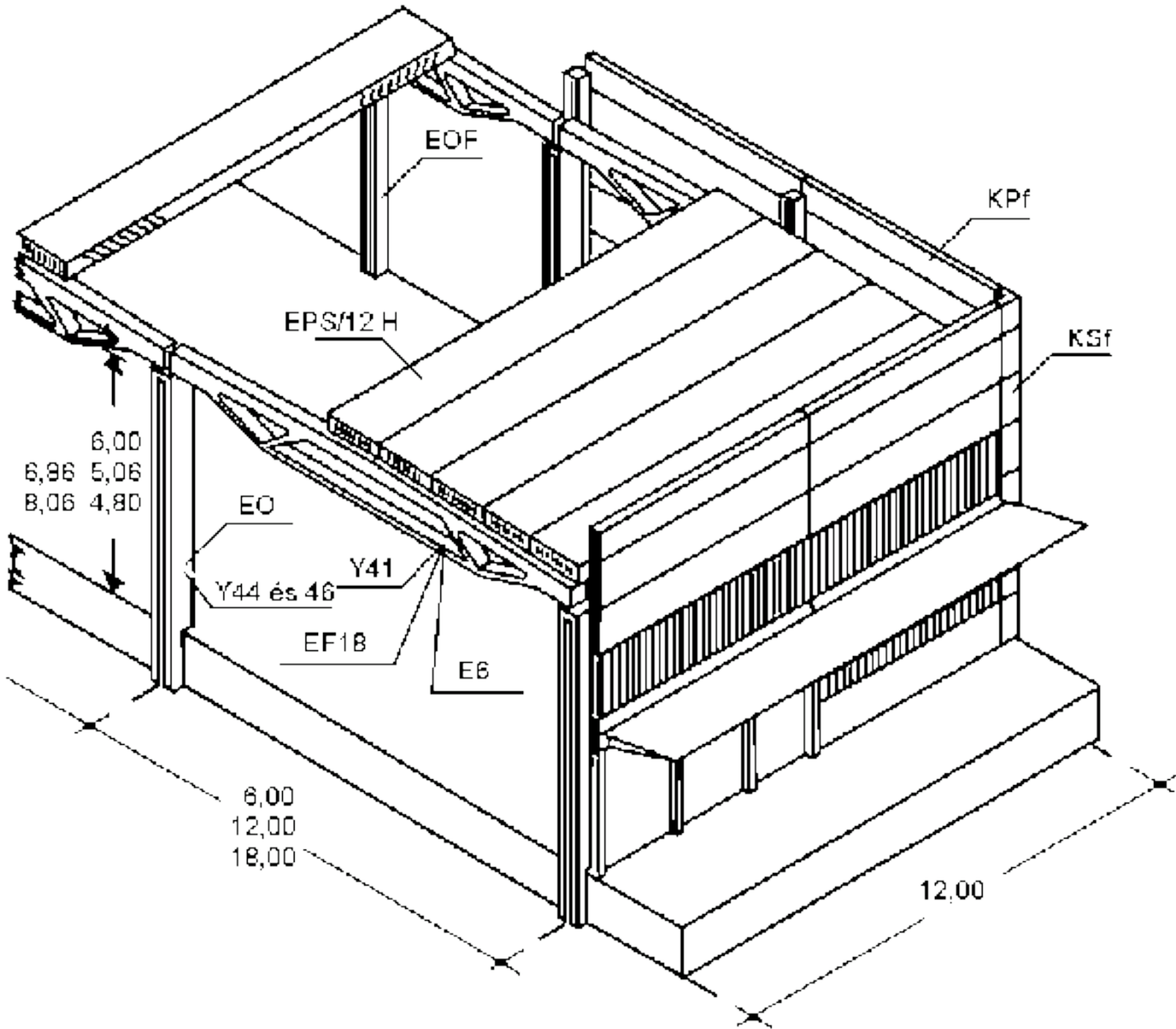
















A modern, single-story building with a dark grey facade. The building features a prominent section on the left with a colorful, multi-colored vertical slat facade. The name "MIKROPAKK" is displayed in white, bold, sans-serif capital letters on the dark grey wall. The building has a flat roof and a long, low profile. In the foreground, there is a gravel parking lot with several concrete curbs and a red fire hydrant. The sky is clear and blue.

MIKROPAKK





terbírás: 5000kg

GD Gép és Daru Kft.

























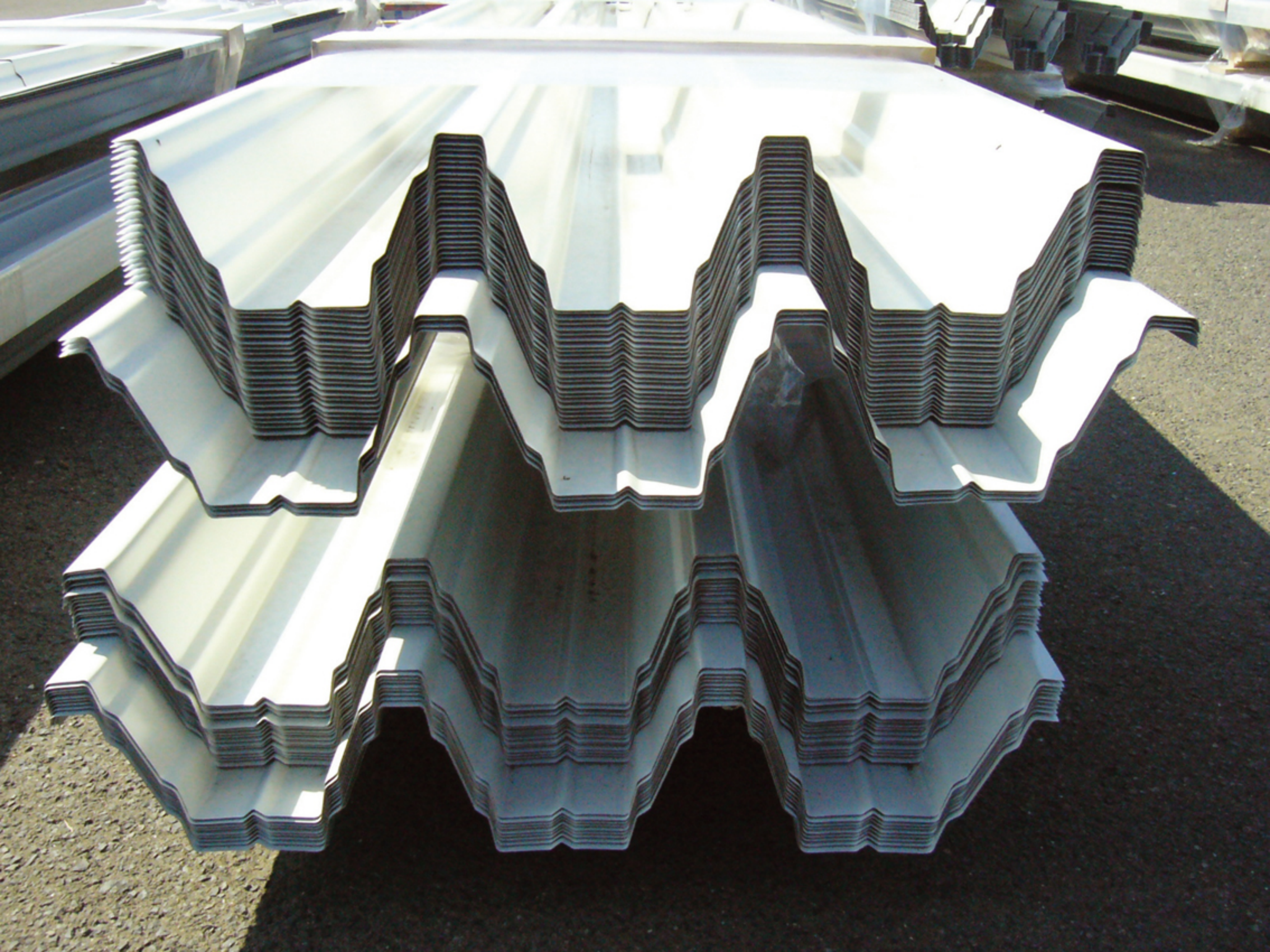


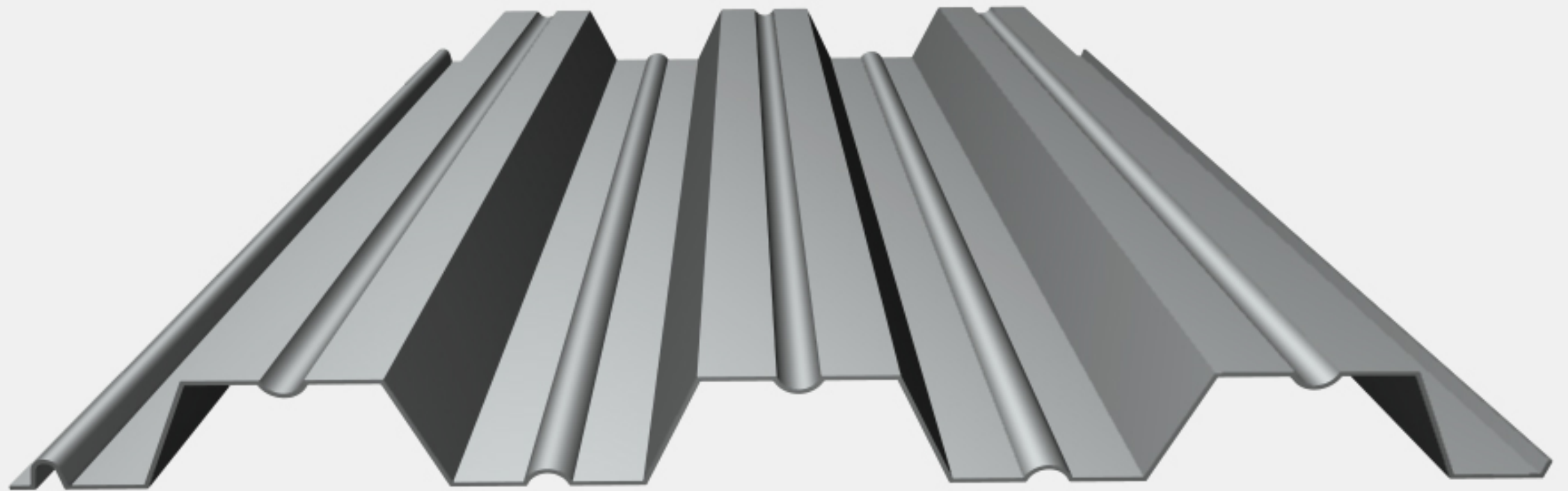


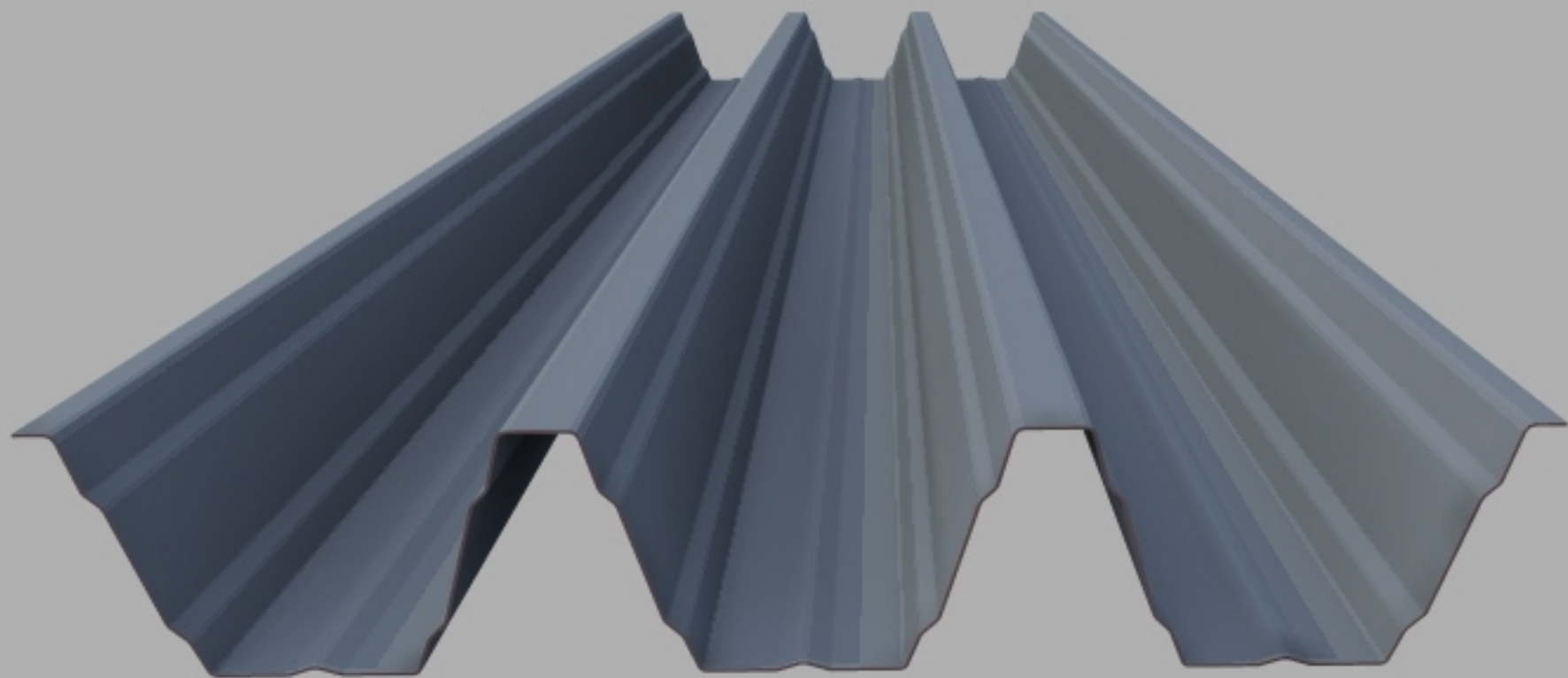
















2011/08/12 08:32



2011/08/12 08:27





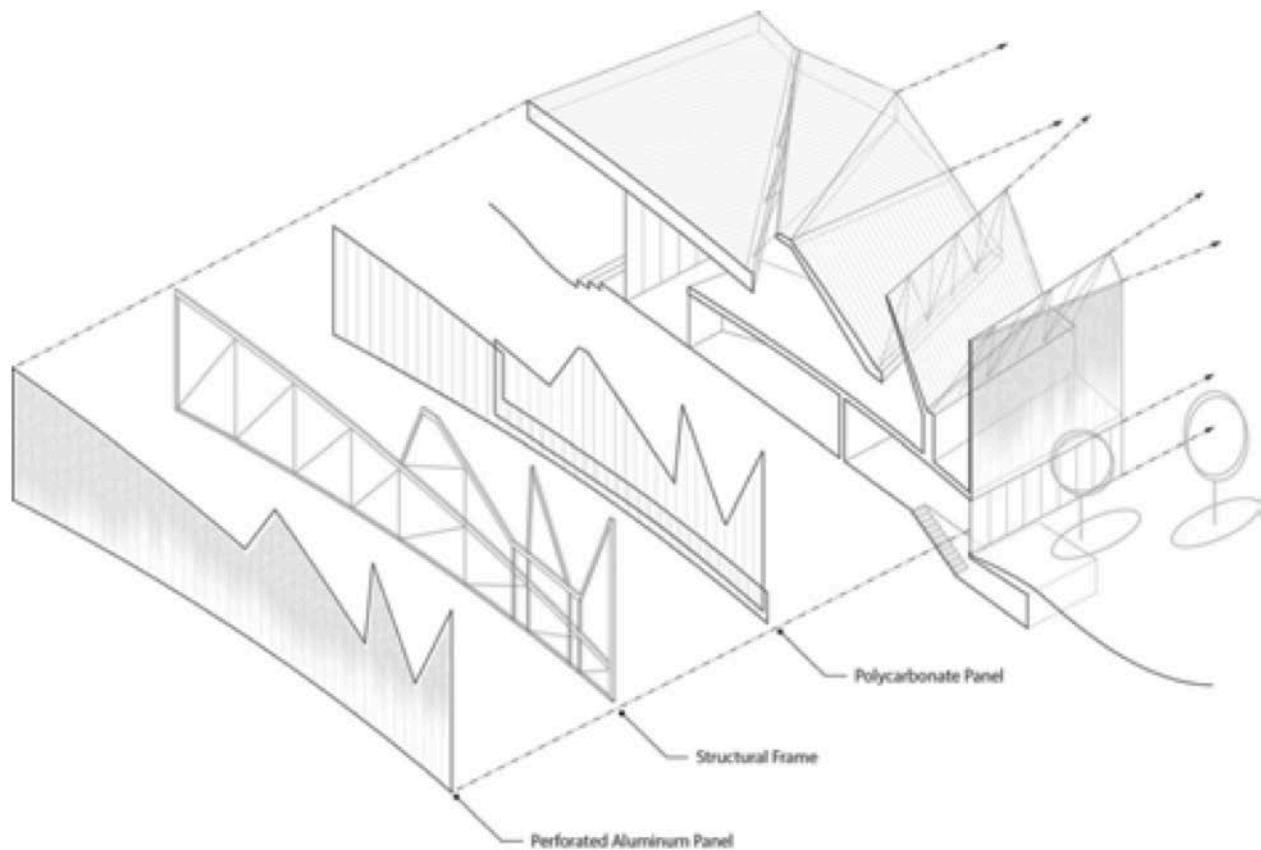








 **Metalsa**



Solar Collection on high roof oriented toward Southern exposure

High glazed skylights to maximize natural daylighting oriented towards Northern natural vista

Expansive overhangs regulate direct light, cutting down on solar gain fluctuations

Office workspace view oriented to natural vista

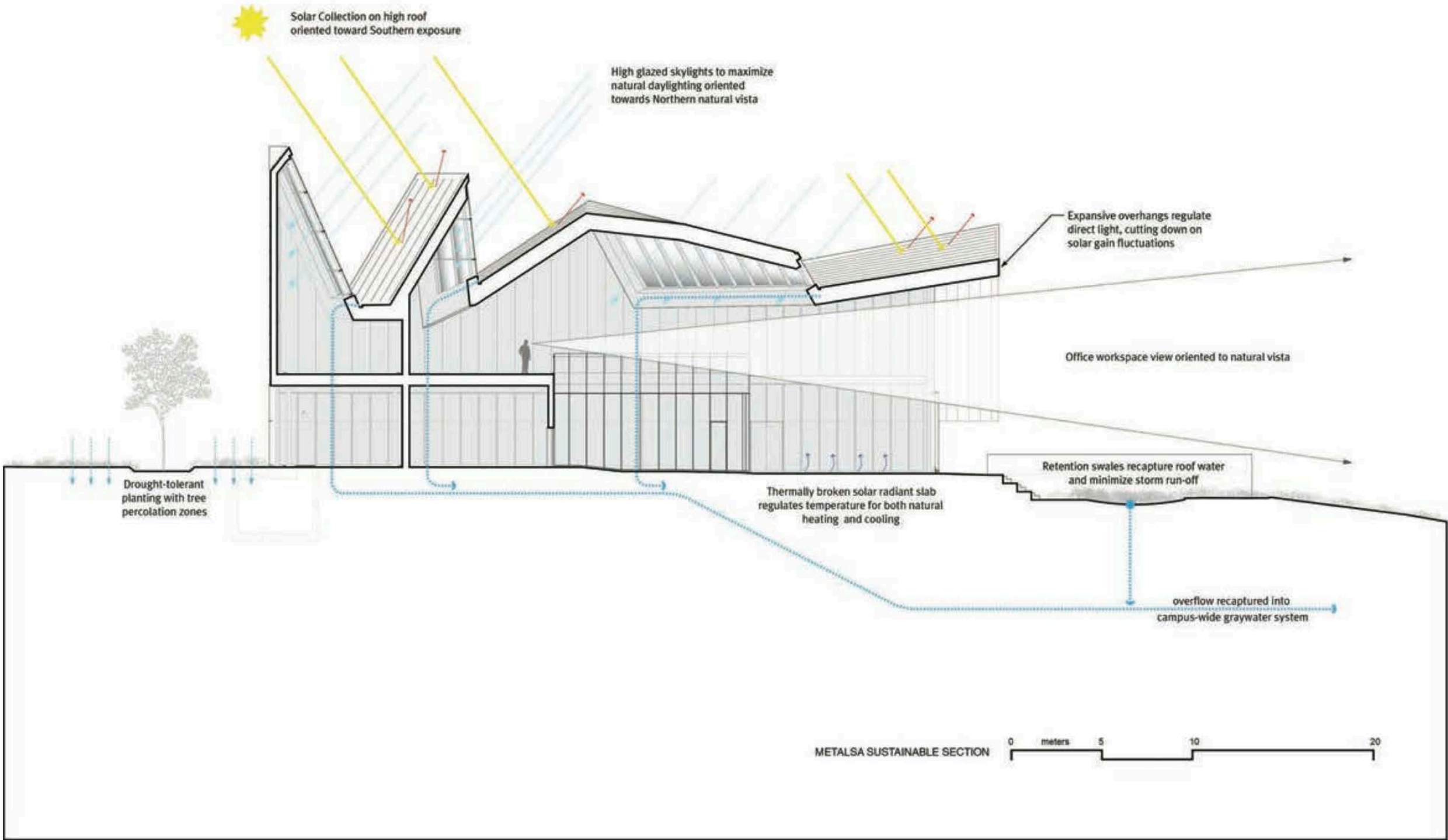
Drought-tolerant planting with tree percolation zones

Thermally broken solar radiant slab regulates temperature for both natural heating and cooling

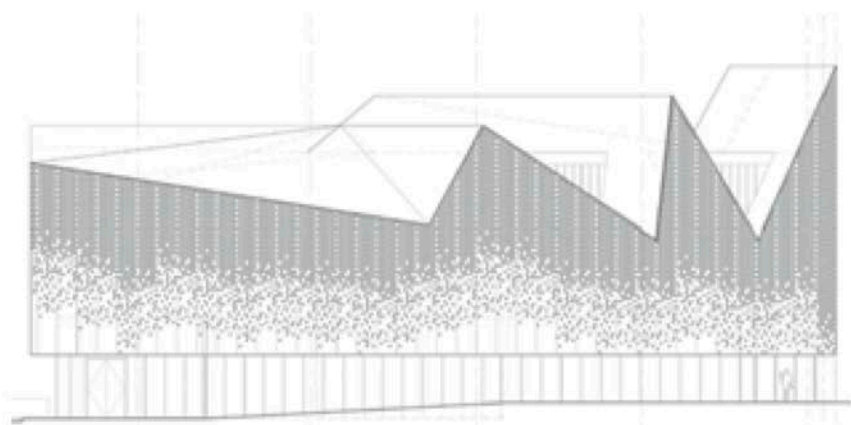
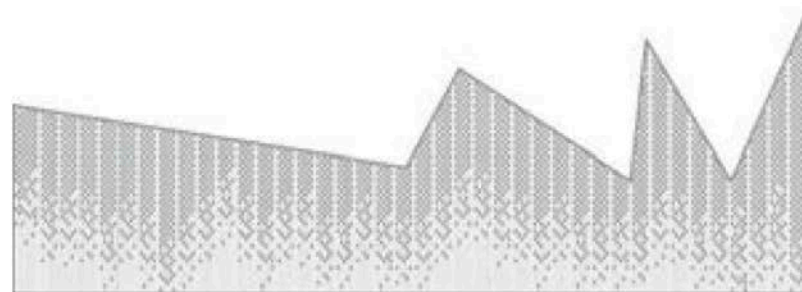
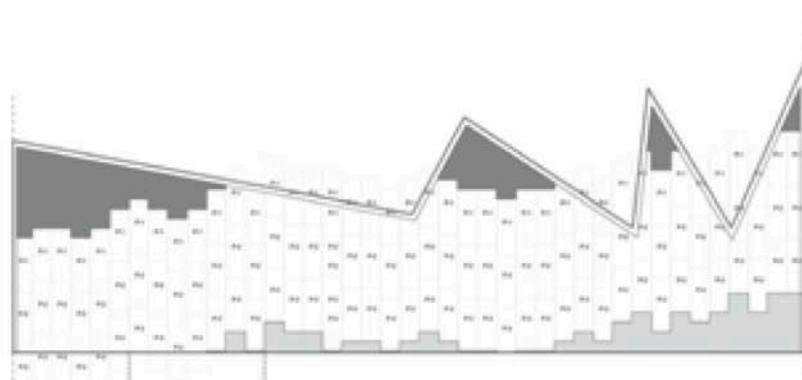
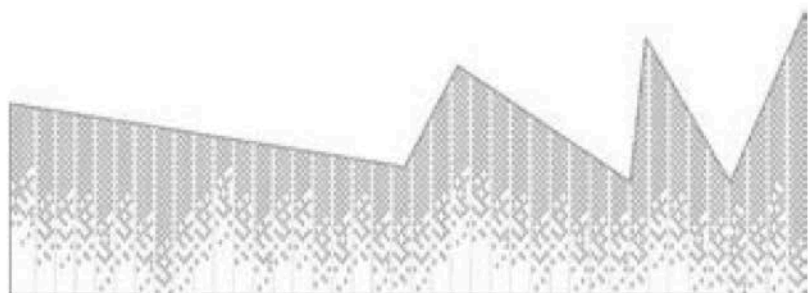
Retention swales recapture roof water and minimize storm run-off

overflow recaptured into campus-wide graywater system

METALSA SUSTAINABLE SECTION





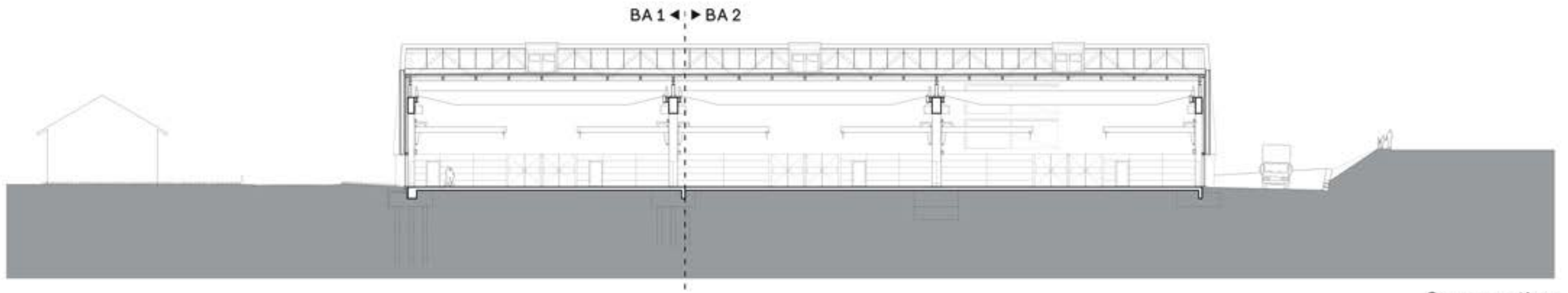




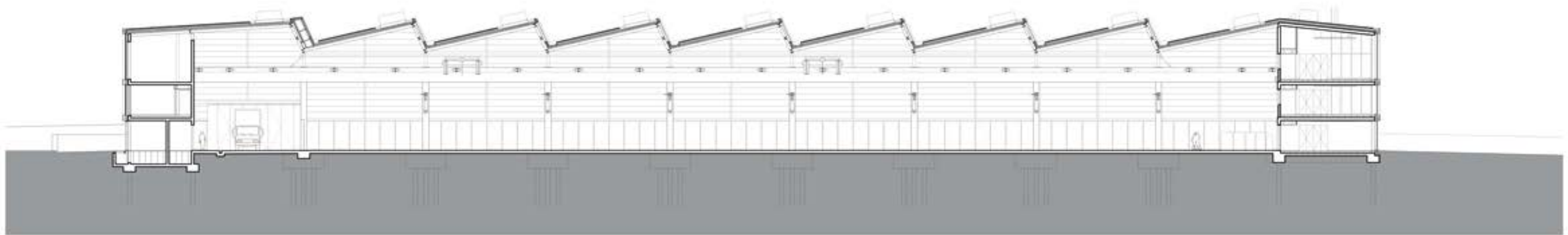








Cross section



Longitudinal section

0 1 5 15 m















1
A

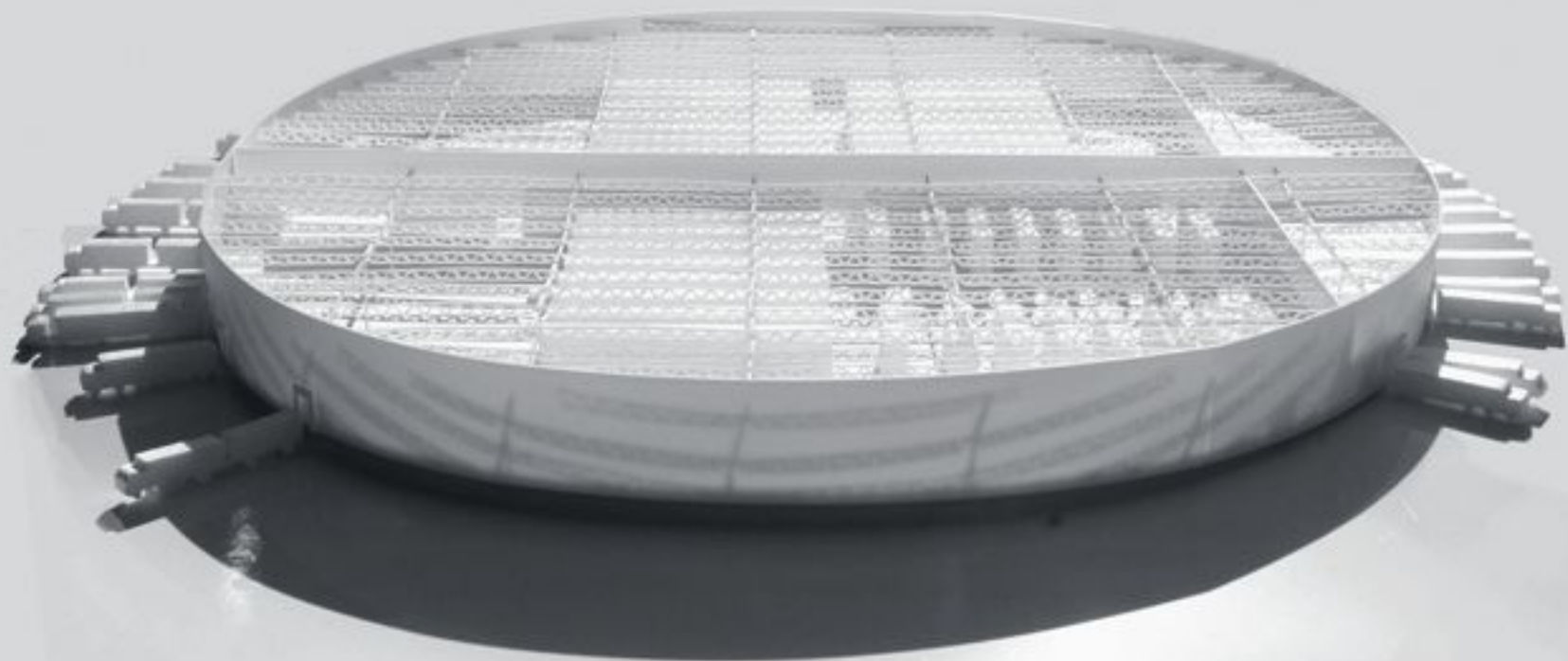
1
B









































LIGAS
17:55











DOHÁNYZÁS
ES NYILT LANC
HASZNÁLATA
TILOS!









